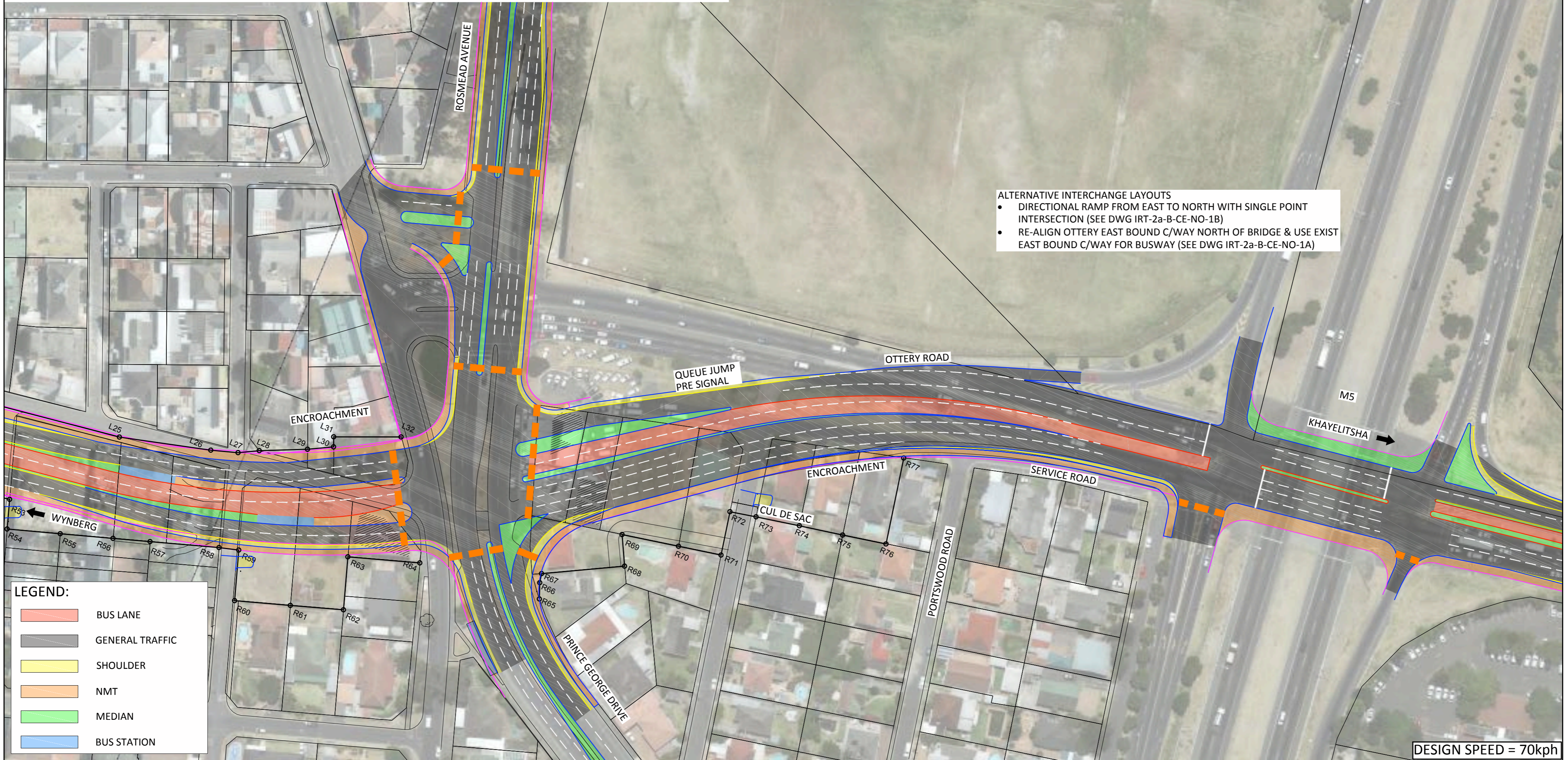


NEW OTTERY AT LINK LOOKING EAST



ALTERNATIVE INTERCHANGE LAYOUTS

- DIRECTIONAL RAMP FROM EAST TO NORTH WITH SINGLE POINT INTERSECTION (SEE DWG IRT-2a-B-CE-NO-1B)
- RE-ALIGN OTTERY EAST BOUND C/WAY NORTH OF BRIDGE & USE EXIST EAST BOUND C/WAY FOR BUSWAY (SEE DWG IRT-2a-B-CE-NO-1A)

LEGEND:

	BUS LANE
	GENERAL TRAFFIC
	SHOULDER
	NMT
	MEDIAN
	BUS STATION

DESIGN SPEED = 70kph

NO	DATE	DESCRIPTION	CHECK	APP.
01	20-02-2015	Layout updated		SP

SURVEYED	
DESIGNED	SP
DRAWN	YW
CHECKED	SP
APPROVED	CHIEF ENGINEER

MELISSA WHITEHEAD COMMISSIONER : TRANSPORT FOR CAPE TOWN	
DAVE. HUGO DIRECTOR: INFRASTRUCTURE	MADDIE MAZAZA DIRECTOR: PLANNING
RON HAIDEN Pr Eng. MANAGER: PUBLIC TRANSPORT INFRASTRUCTURE	GERSHWIN FORTUNE MANAGER: SYSTEM PLANNING & MODELLING

IRT: CONSTRUCTION OF PUBLIC TRANSPORT INFRASTRUCTURE FOR PHASE 2a LANSDOWNE - WETTON CORRIDOR OTTERY ROAD - ROSMEAD TO M5-QUEUE JUMPS	
SCALE 1:1000	DISCIPLINE: CE = CIVIL ENG. ARC = ARCHITECT EE = ELEC. ENG
SHEET A2	INFRA. TYPE: ST = BUS STOP S = STATION D = DEPOT B = BUSWAY
	PROJ. Name: IRT - 2a - B - CE - NO-1 - S - 01
	STATUS CODES: S = SPATIAL CONCEPT T = TENDER C = CONSTRUCTION A = AS-BUILT

